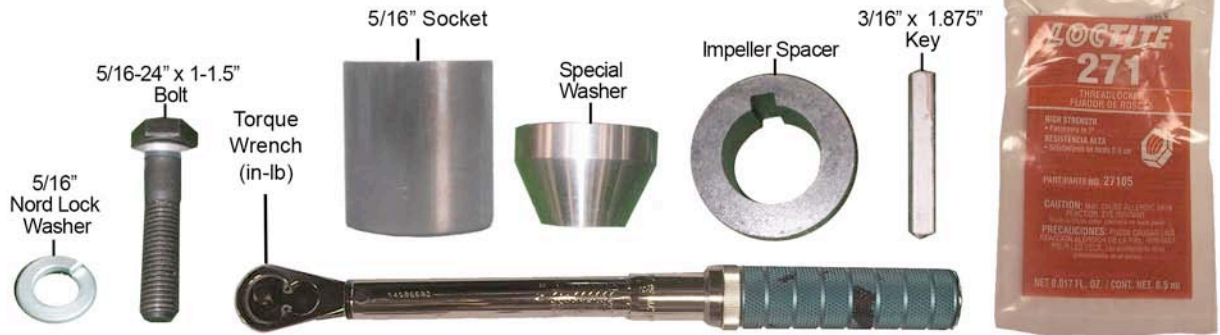


TECHNICAL BULLETIN
Torque Specification

This technical bulletin applies to RAMFAN blowers models: GF164SE, GF165/165SE, GF210/ 210SE, GF240

Tools/Materials Required: *Safety Glasses*, Industrial Strength Degreaser, Shop towels, Permanent Marker, Compressed Air, Torque Wrench >300inch-lbs, Socket 5/16", Impeller Bolt Kit (Ordered from Euramco Safety) PN: GA312K

Kit includes: *Loctite 27*, *Key*, *Spacer*, *Special Washer*, *Bolt*, *Nord Lock Washer*



MUST USE A CALIBRATED TORQUE WRENCH!

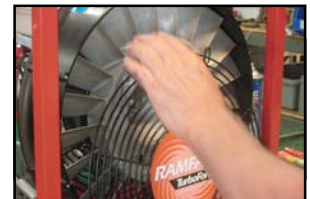
Inspections:

1. GF165 - Remove the front finger guard from blower.
 GF210 & GF240 – Remove finger guard and shroud as an assembly.
2. Observe the white line across the bolt, conical spacer and impeller. If the white line is broken or shifted replace the impeller bolt with the new Impeller Bolt Kit.



Installation Instructions:

1. GF165 - Remove the front finger guard from blower.
 GF210 & GF240 – Remove finger guard and shroud as an assembly.



Above: GF165

GF210 & GF240
 Remove finger guard and shroud.

Note: the top bolt is reverse from all the other bolts

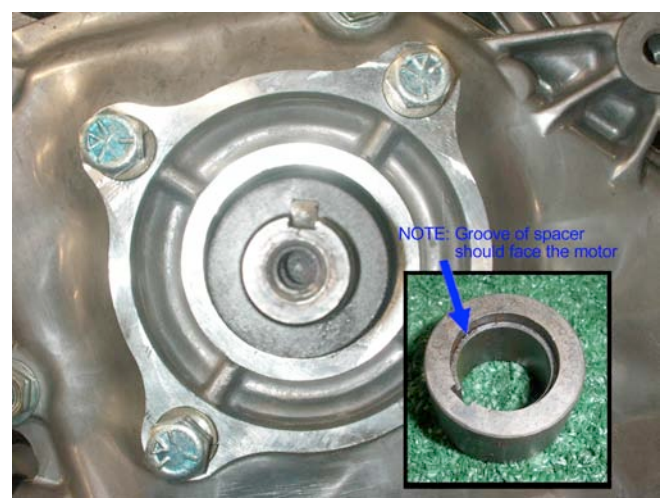
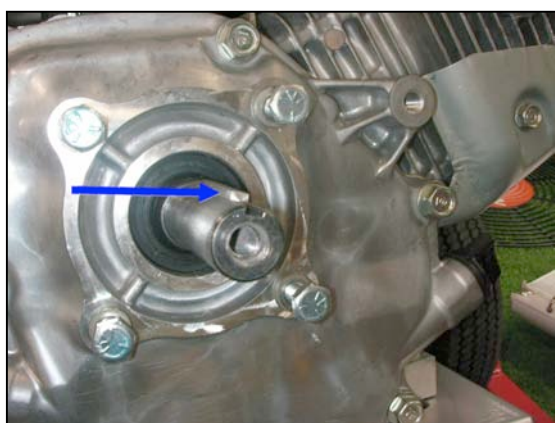


1. Remove impeller assembly.
 - A) Remove impeller Bolt or impeller nut. To remove impeller nut, first loosen setscrew in face of nut. Remove nut with 1-1/4" socket
 - B) Remove lock washer and conical spacer.
 - C) Remove impeller
 - D) Remove impeller key and spacer
2. Spray industrial strength degreaser into the motor shaft threads to remove any oil residue.

3. Use compressed air to blow-dry the internal threads of the motor shaft. Wipe up splatter with shop towel.

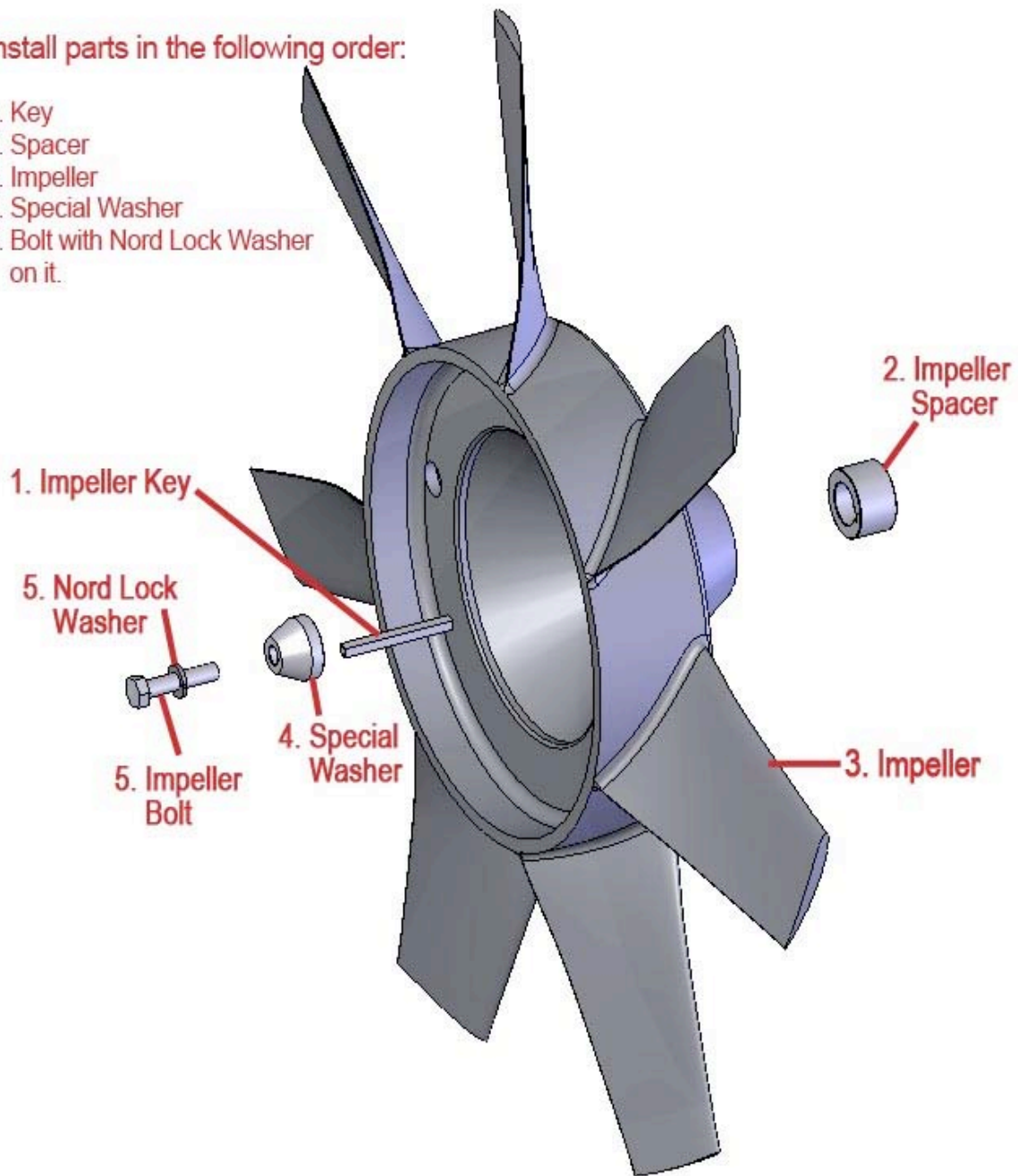


4. Install new impeller key
5. Install new impeller spacer with the groove facing the motor.



Install parts in the following order:

1. Key
2. Spacer
3. Impeller
4. Special Washer
5. Bolt with Nord Lock Washer on it.



6. Install Impeller.
7. Assemble bolt, Nord Lock Washer and Special Washer.



8. Apply 2 drops of Loctite271 to the internal motor shaft threads and 2 drops to the end of the impeller bolt threads.



9. Screw the bolt into the shaft as tight as possible by hand.



10. Torque the bolt to 275 in-lbs then tighten bolt down.



11. Apply an indicator mark to both nuts and impeller to track movement.



12. Reattach finger guard or finger guard/shroud assembly.



13. Allow Loctite to set for a minimum of 1 hour before testing the blower.

14. After 1 hour start blower and run for 5 minutes.

15. Turn the blower off and inspect the indicator mark for movement.

16. If movement is observed install a new impeller bolt kit and repeat installation process described herein. Do not re-torque impeller bolt assembly. Do not reuse impeller bolt kit parts.